



*General Information*

# HT-100P(S)

Hydrostatic Pressure  
Level Transmitter





Pressure Level Transmitter  
[ ]

Tank

Tank

Tank  
(4 20mA)



Ceramic Capacitive Sensing Detector

Sensor

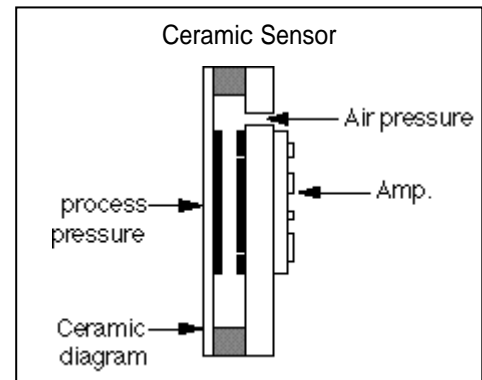
$$P = \rho \cdot g \cdot h$$

P =

h =

g = 가

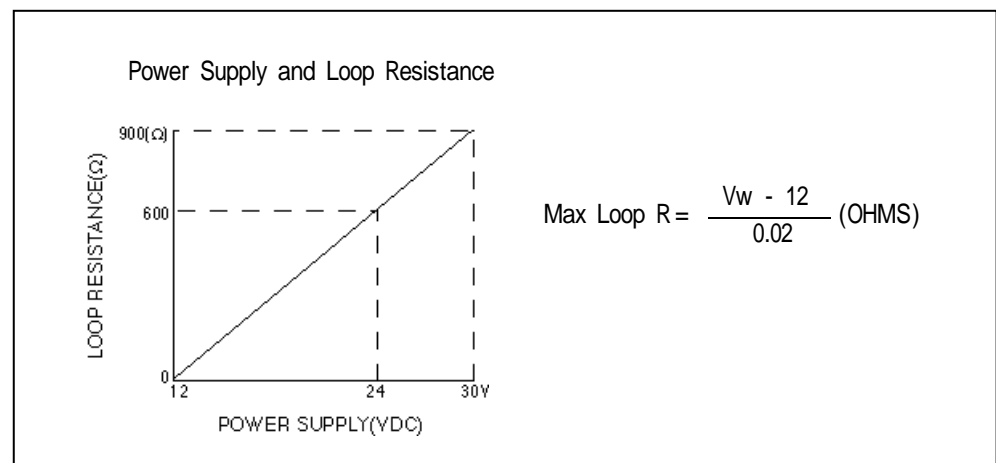
=

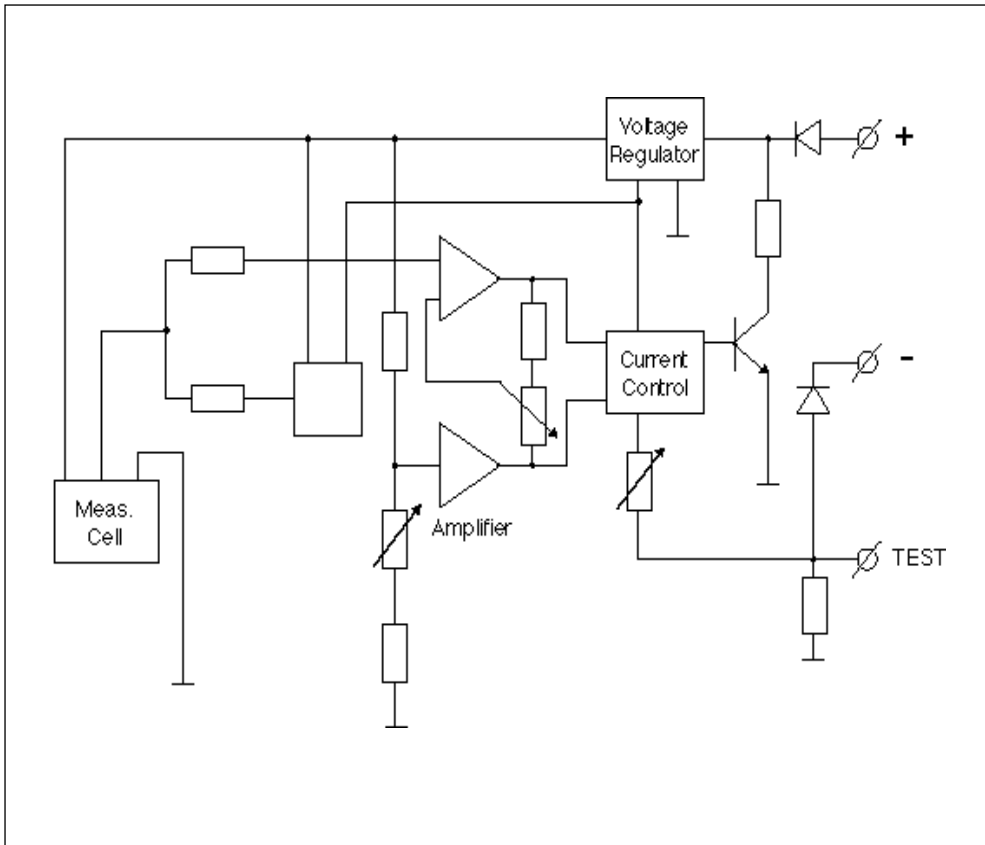


Tank



Type		
Model	HT-100PS, T	HPT-100PS, T
Power Supply	DC 12~30 V	DC 12 ~m 30 V
Accuracy	± 0.3 % (Full Span)	± 0.3 % (Full Span)
Linearity	± 0.25 %	± 0.25 %
Hysteresis	± 0.03 %	± 0.03 %
Repeatability	± 0.03 %	± 0.03 %
Stability	± 0.5 % (One year)	0.5 % (One year)
Response Time	15 MSEC (63 % full scale)	15 MSEC (63 % full scale)
Operating Temp.	-30 ~ + 100	-30 ~ + 100
Storage Temp.	-40 ~ + 125	-40 ~ + 125
Over-Range Protection	300 % +	300 % +
Range	Max. 20 m	Max. 20 m
Wetted Materials	98 % ALUMINA CERAMIC	98 % ALUMINA CERAMIC
Cable Gland	2 - 1/2 PT	2 - 3/4 PT
Explosion Proof		EX d II C T4 IP65

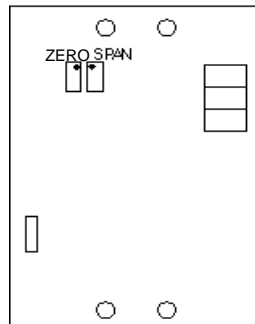


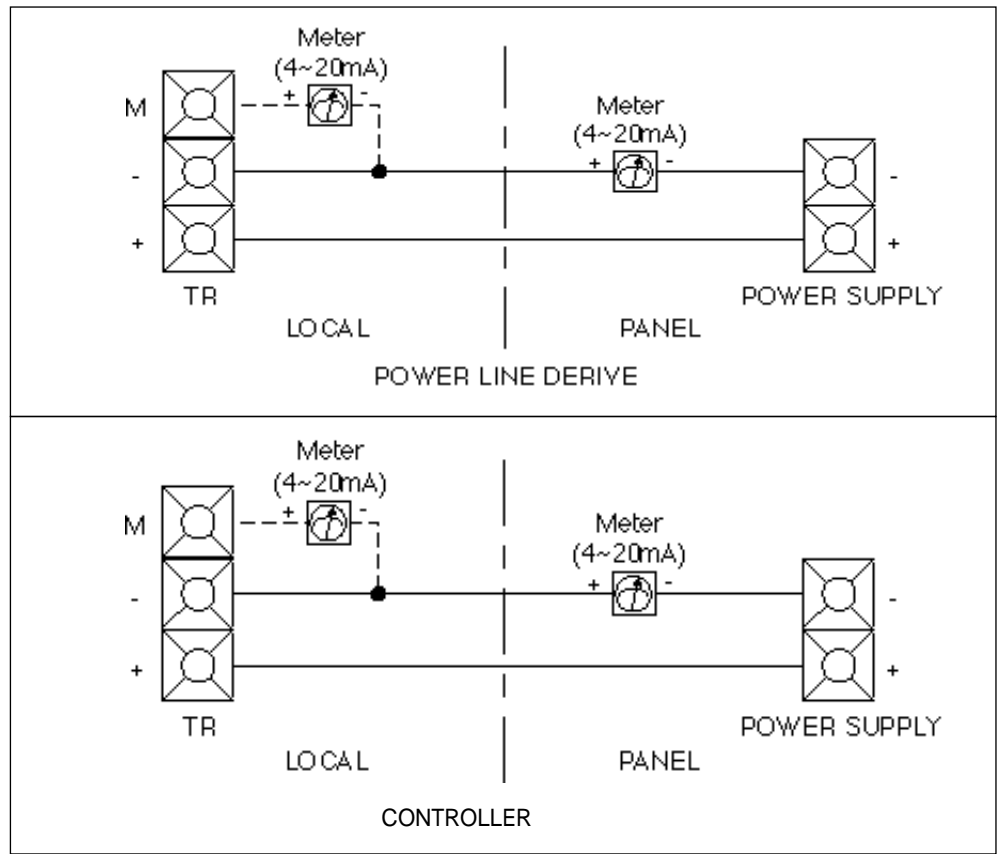


Gauge, Tank, Level  
가

- |                            |        |            |
|----------------------------|--------|------------|
| Pressure Level transmitter | Tank   | Level      |
| 1) Nozzle                  | Pipe   | 가Pipe      |
| 2) Tank                    | 가      |            |
| 3) Tank                    | 가      | Guide Pipe |
| 4) Nozzle                  | Valves |            |
| 5) Open Tank               |        |            |

Pressure Level Transmitter	Range
가 Zero, Span	Range
Set .>	
Process	가
Full Scale ± 10%	가
0%	Amp
Zero V · R	가4mA가
가 Tank	100%
	가
20mA가	Span V · R





- 1) Diaphragm
- 2) Signal Shield
- 3) Transmitter Local Case

( 2~3 ) Cell

- 1) 4mA (DC 24V) ⊕, ⊖ 가
- 2) 20mA Insert Amp. 가 Cell ( 가, HITROL A/s )
- 3) L/T Range 가 Full Range ± 10% Amp Zero, Span 가 HITROL
- 4) L/T Range 가



62-182

: (031) 943-0875~7(代)  
: (031) 943-0878, 5600

<http://www.hitrol.co.kr>

[hitrol@hitrol.co.kr](mailto:hitrol@hitrol.co.kr)