



General Information

# HT-100W Series

Synchro & Potention Meter Type  
Water Level Transmitter

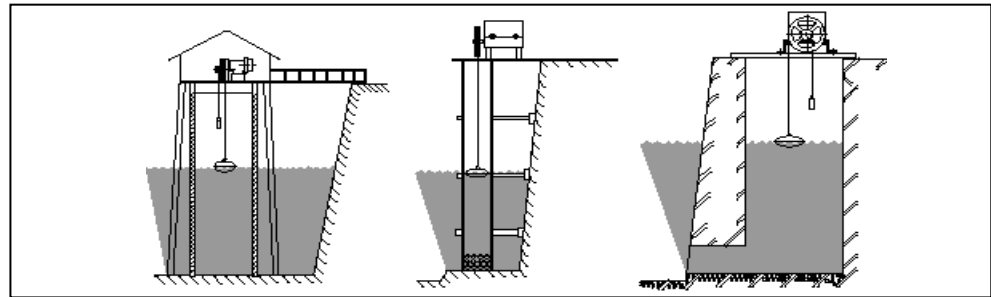


Water Level Transmitter  
Dot Wire Float  
Dot Wire Drum ( )

\*  
\*

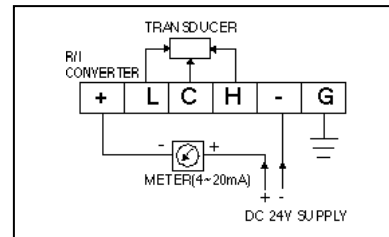
Model	HT-100W	HT-100WS
	(IP65)	(IP65)
	Set Type(MFG. STD.)	Set Type (MFG. STD.)
	-20 ~+60	
	1) Synchro 2) 0-1kΩ DC 4-20 mA 3) 4-20 mA DC	1) Synchro 2) 0-1kΩ 3) 4-20 mA 4) BCD-P
	Micro Switch	
	2-SPDT( ) 4-SPDT( )	
	AC 250 V 15 A	
	PF 1 ( ) ( )	
	30 m	
	Synchro ± 2.0 F.S, 4-20 mA	± 1.5 % F.S

## Setting



1. Potention Meter Type ( :DC 4-20mA)

(2C × 1.25 Ø)



2. Synchro Type ( : Synchro)

(5C × 1.5 Ø)

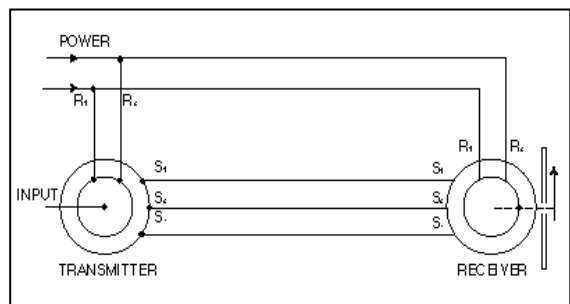
(Synchro S1, S2,

S3 R1, R2

).  
Transmitter 가

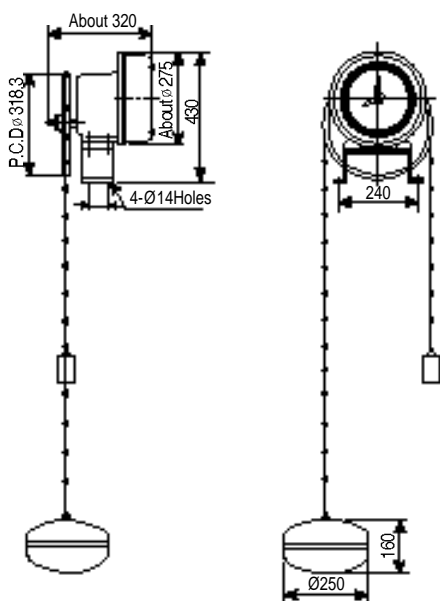
S1

S3

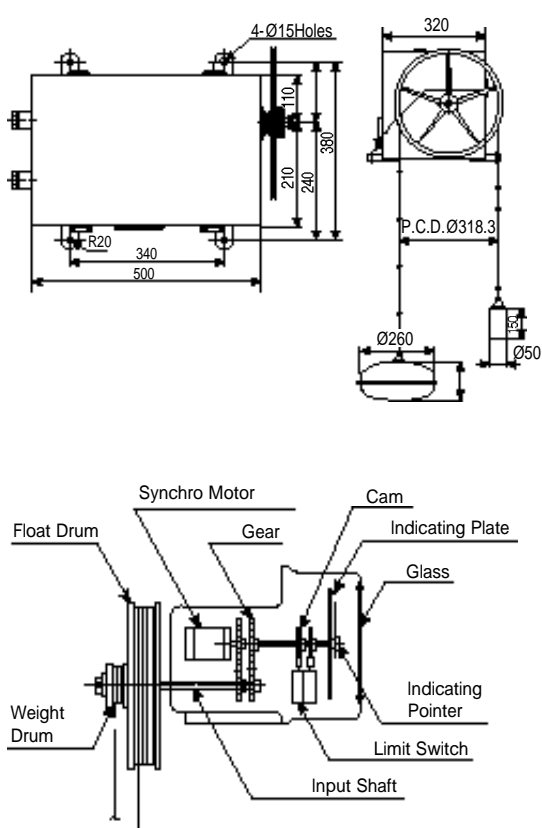


1.	Water Level Transmitter, Receiver	Transmitter Head	Case	Span	0%	4mA		
		Set Screw		Set	ㄱ)	Float	Span	
		Screw			ㄴ)	가	100%	20mA
2.	Water Level Transmitter, Receiver	Transmitter Head	Case	Span	ㄷ)	가	(HLC · R/I)	Span
		180.	Set Screw		ㄹ)	100%	20mA	
			Set Screw		ㅁ)	Zero/Span		2-3
3.	Zero	Span		B)	Synchro Type			
	(	)		Zero				
A)	4-20mA Type			ㄱ)	Float	Drum	Zero	
Zero				ㄴ)	가	Zero		
ㄱ)		Float	Zero	ㄴ)	가	Zero		
ㄴ)		가	0%	ㄷ)	가	1		Zero
ㄷ)	가		(HLC · R/I)	Zero				

Standard Type

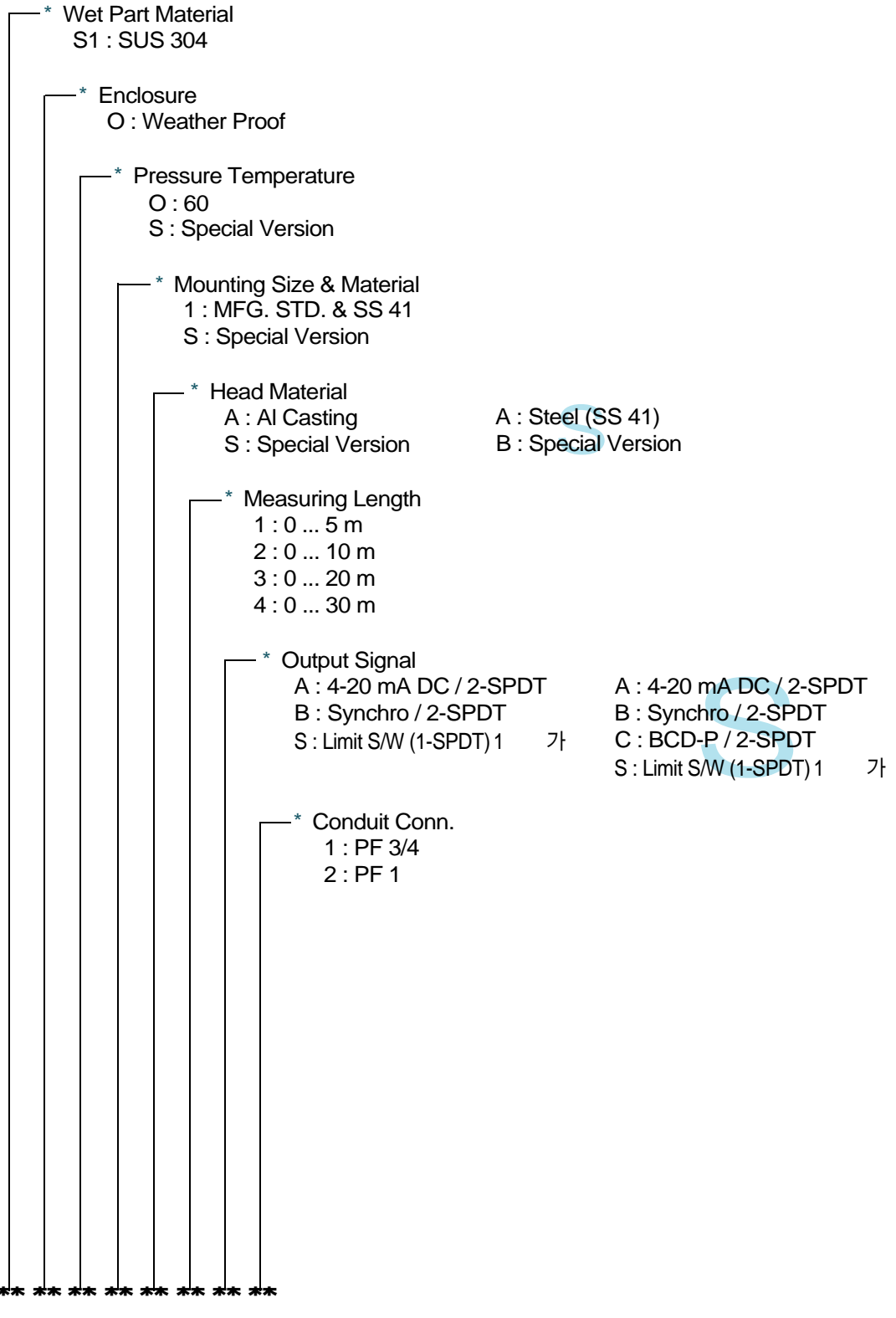


Box Type



	Type	Synchro
	Mounting Method	Panel front mounting
	Power Source	AC 110 V or 220 V 60 Hz
	Input Signal	Synchro
	Scale Range	Option
	Ambient Temp.	-20 ~+60
	Feature	A very strong lightning.

## ORDER CODES



62-182

: (031) 943-0875(代)-7

: (031) 943-0878, 5600

<http://www.hitrol.co.kr>    [hitrol@hitrol.co.kr](mailto:hitrol@hitrol.co.kr)