

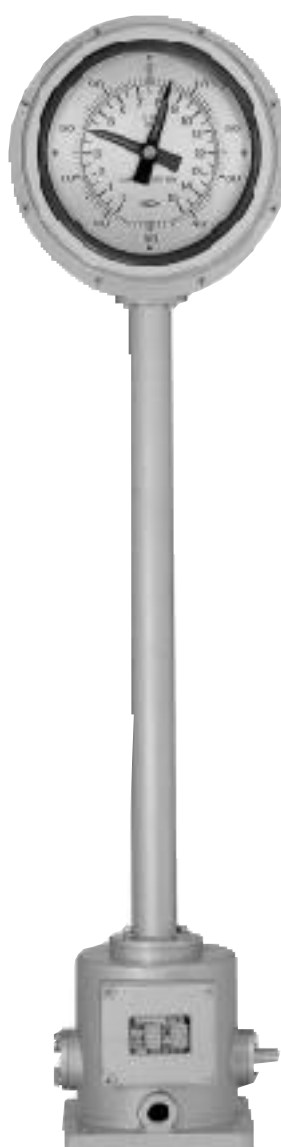


General Information

General Information

HTG-100 Series

Synchro & Potention Meter Type
Gate Position Transmitter



HITROL CO., LTD.

General

Gate position transmit and indicate the gate position so that the input shaft of HTG-100 rotates according to the displacement of gate and rotation of the hoist drum.

This transmitter generally realized the high stability and reliability through the sufficient past experiences and records, restrictively selected componets, and strict quality management.

Specifications

Body	Aluminum
Type of Indicator	1-point dial or 2-point dial
Protection Regulation	Water droplet proof, water proof(IP 54)
Installation	Stand type(MFG. STD)
Ambient temperature	-20 ~ +60
Output Signal	1) Synchro 2) Potentiometer(0~1 k Ω)+HLC-R/I=DC 4~20 mA
Type of Switch	Micro switch
Type of contact point	2-SPDT(standard) : 4-SPDT
Capacity of contact point	AC 250 V 15 A
Cable conduit	PF 1 "(Standard) or by customer order for others

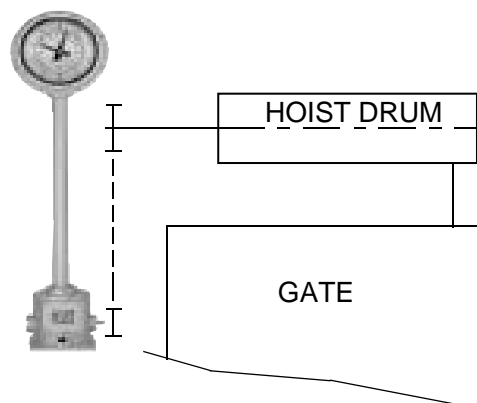
Applications

- * It can detect the positions of various gate positioners.
- * It can automatically indicate the gate position changes, give alarms for upper and lower limits, and/or operate by installing at the side of gate drum.

Installation Method

It is installed on the base at which the gate hoist drum is mounted, using screws.

The sprockets of hoist drum and gate position transmitter, s(HTG-100) input shaft is connected using chains, and the revolutions of hoist drum is transferred to the gate position transmitter, s input shaft.



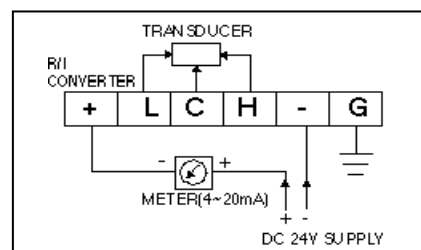
Wiring Method

1. Potentionmeter type (output signal : DC 4~20 mA)

When connecting the transmitter and adjuster, at least a shielded wire(2C \times 1.25 \varnothing)should be used.

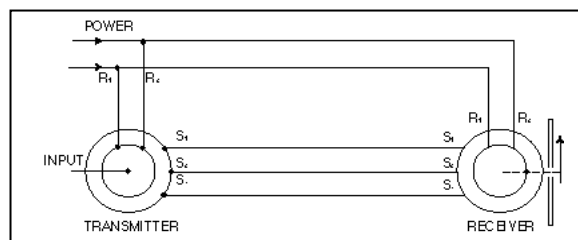
when connecting the transmitter and adjuster, separate cable conduits should be used for signal cable and power cable.

Either the transmitter or adjuster may be grounded.



2. Synchro type (output signal : Synchro)

When connecting the transmitter and adjuster, at least ordinary vinyl cable (5C \times 1.5 \varnothing) should be used(S1, S2 and S3 of synchro terminals are output terminals.). When connecting the transmitter and power cable.



Adjustment Method

1. Adjustment of indicating needle

After completion of assembling and wiring connection between hoist drum, gate position and receiver, and under the state that power is turned on, the case of gate position head is removed, adjust the indicating needle at zero point corresponding to the gate height by loosening the set screw from the front for indicating needle, and set screw should be tightened.

2. Adjustment of contact point

After completion of assembling and wiring connection between hoist drum, gate position and receiver, and the case of gate position head is removed, adjust the contact point at the location of upper and lower alarms and automatic operation by loosening the set screw of 180, adjusting cam assembled with gear system, and set screw should be tightened.

3. Zero and span adjustment(Check that it is properly wired.)

A) Output signal of 4~20 mA

* Zero adjustment

Under the state that power is turned on, move the gate to span location.

At this time, check the connected indicator displays 0 % or 4 mA.

When indication is not correct, adjust to 0 % or 4 mA by turning the zero potentiometer of the internal amplifier (HLC-R/I).

* Span adjustment

Under the state that power is turned on, move the gate to span location.

At this time, check the connected indicator displays 100 % or 20 mA.

When indication is not correct, adjust to 100 % or 20 mA by turning the zero potentiometer of the internal amplifier (HLC-R/I).

Repeat the above procedures 2 or 3 time for accurate adjustment of zero and span.

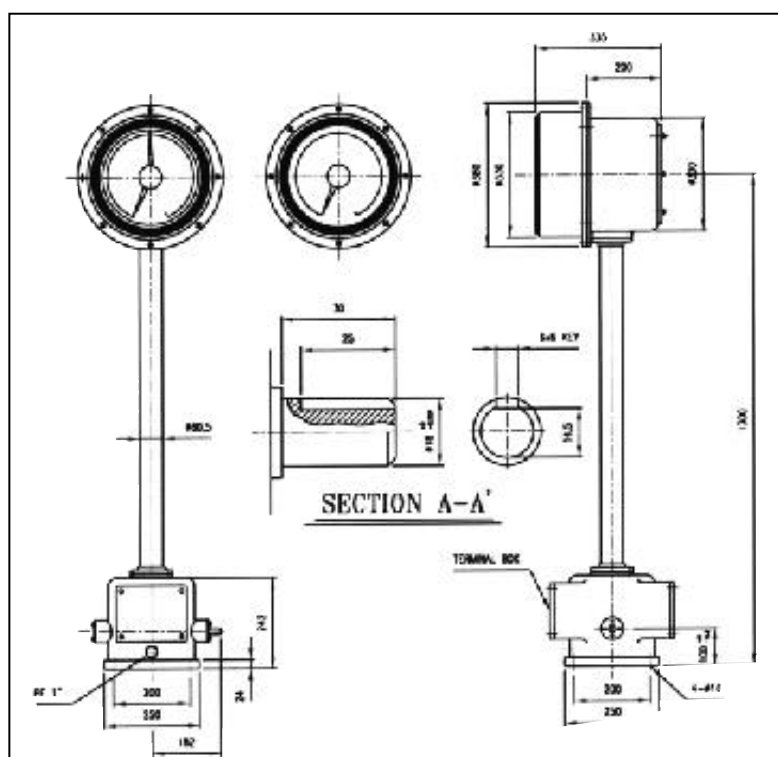
B) Output signal of synchro type

* Zero adjustment

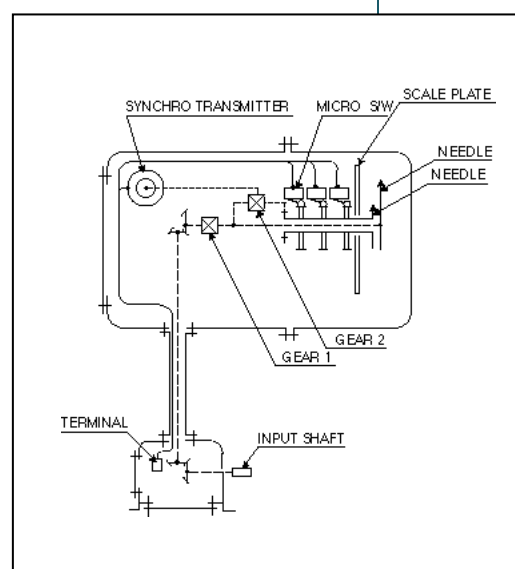
Under the state that power is turned on, move the gate to zero location.


At this time, check the connected indicator displays zero point.

When indication is not correct, accurately adjust zero point according to the " 1. Adjustment of indicating needle ".

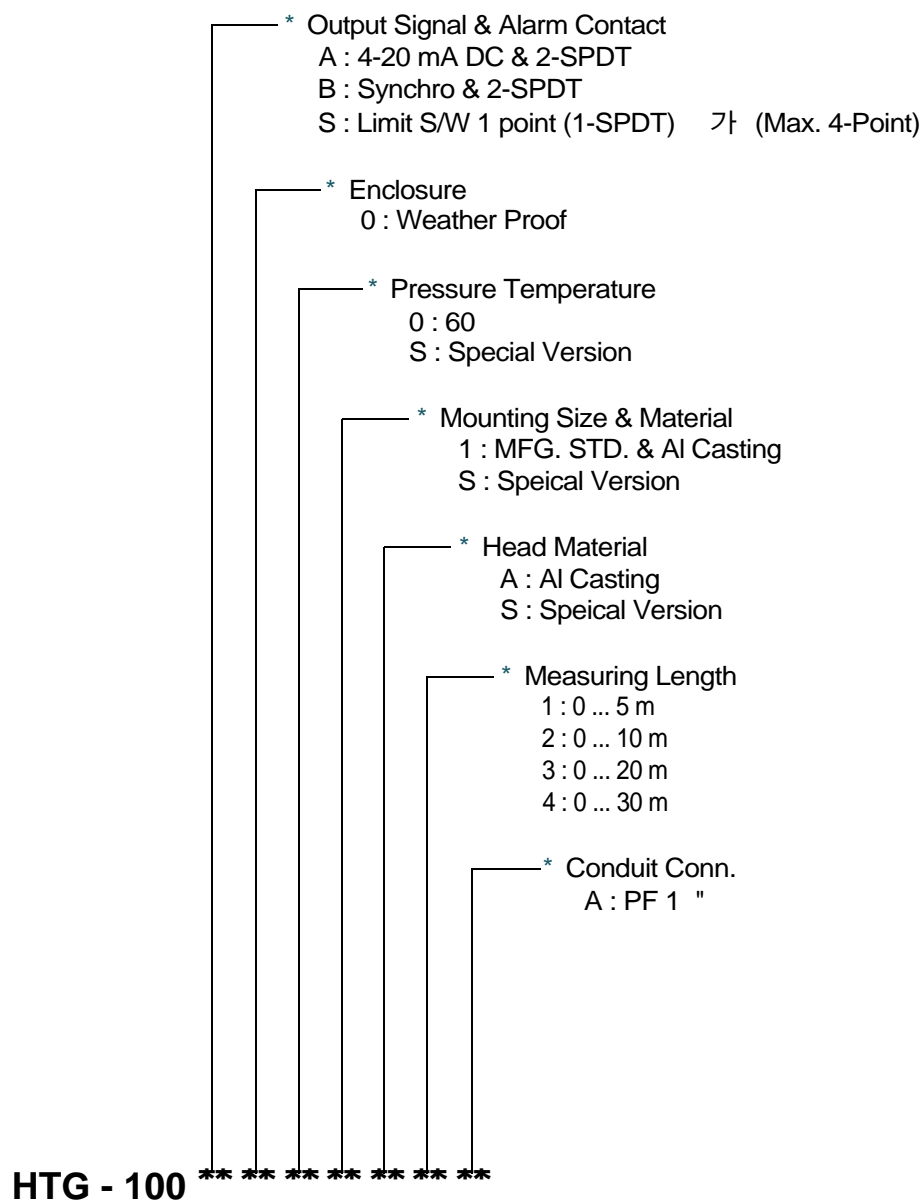


Dimensions



	Type	Synchro
	Mounting Method	Panel front mounting
	Power Source	AC 110 V or 220 V 60 Hz
	Input Signal	Synchro
	Scale Range	Option
	Ambient Temp.	-20 ~+60
	Feature	A very strong lightning.

ORDER CODES



HITROL CO., LTD.

HEAD OFFICE · FACTORY · R & D INSTITUTE

62-182 BONGILCHEON-RI CHORI-MYUN

PAJU CITY KYUNGGI-DO KOREA

TEL : (031) 943-0875~7 (02)744-9922

FAX : (031) 943-0878, 5600

<http://www.hitrol.co.kr>

hitrol@hitrol.co.kr