

Data Logging Software



Ver.2.0



Data Scanner, Data Logging Software Package

Data



Personal Computer Data Interface Data 100

• CHINOBUS

250mm Hybrid LE1000/2000 Series
180mm Hybrid KH/AH/AH3000 Series
100mm Hybrid KL/AL/AL3000 Series
Field Scanner SE1000/2000 Series
Program DP/KP Series
Digital DB/DZ Series
Digital DI1000 Series

• MODBUS

Graphic Recorder BR Series
180mm Hybrid AH3000 Series
100mm Hybrid AL3000 Series
Field Scanner SE3000 Series
Digital LT Series

• Flexible System

Flexible System Module 60 Load
Data 가
* CHINOBUS, MODBUS, Flexible System Protocol

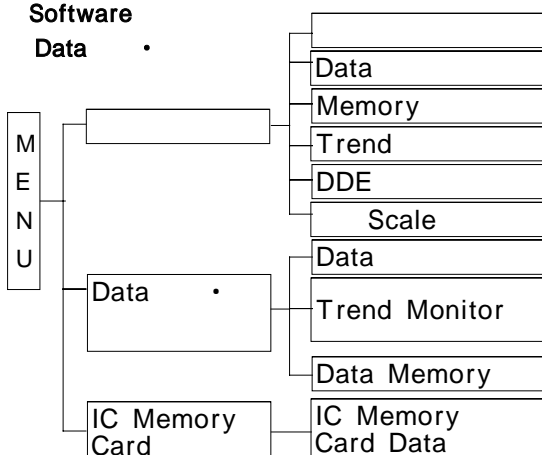
Data Data, Trend

Software Data 가 Software Data Base
LE1000/2000/3000 Memory Card Data
Personal Computer 가 Data

DDE(Dynamic Data Exchange) Data Real
Time Excel Soft

Software

Data



Interface Data Format
Memory Memory Format(Binary, CSV, Text)
Trend Monitor Data Application Data
DDE Range, Scale 가
Real Time Data Trend Graphic Data
10 (Graph Chart)
Data File 10 File 가
LE Series Memory Data Binary Format
Data File

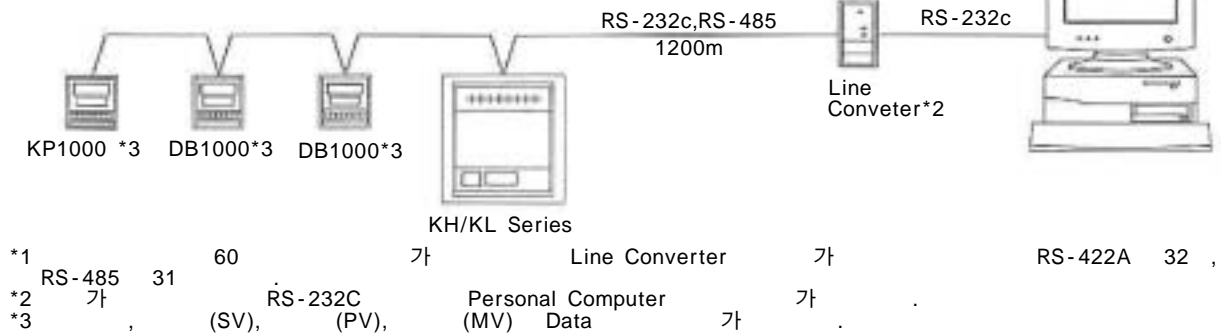
Data



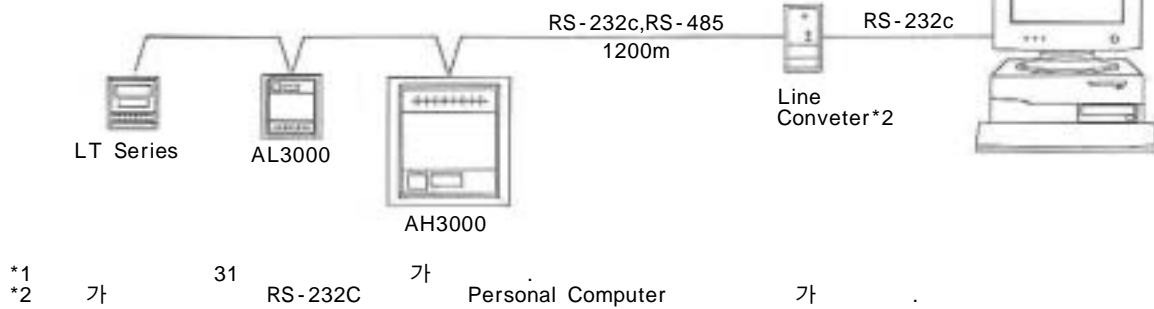
* Data Binary Format Memory Data

CHINO

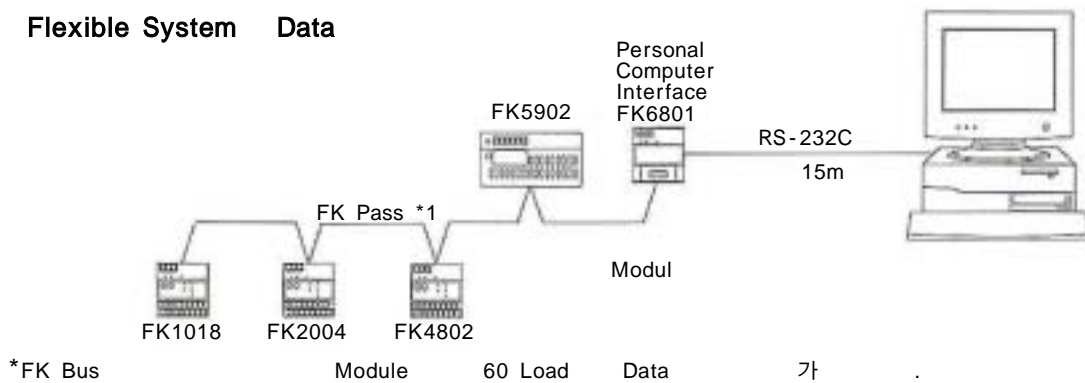
ON Line Data



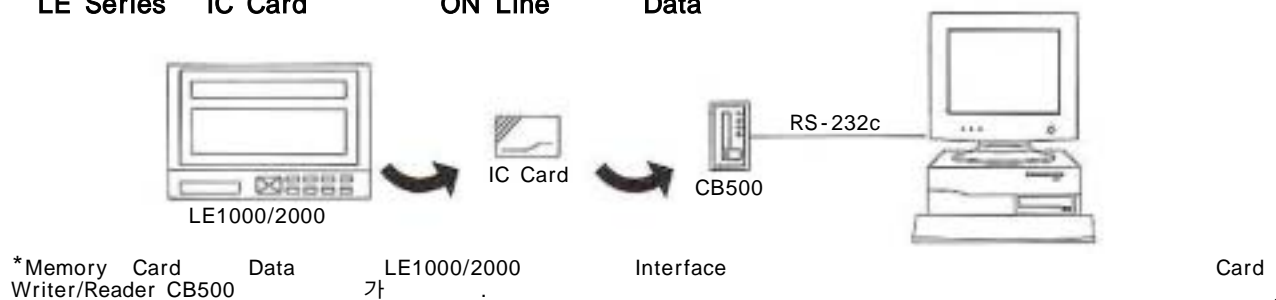
MODBUS Data



Flexible System Data



LE Series IC Card ON Line Data



Data

Monitor

, Scanner,
Data

Data Real Time

구분	구분명	구분값	구분명	구분값	구분명	구분값	구분명	구분값	구분명	구분값	구분명	구분값
1	T01	온도	24.0									
2	H01	습도	49.9									
3	T02	온도	29.0									
4	H02	습도	49.9									
5	T03	온도	27.0									
6	H03	습도	49.9									
7	T04	온도	27.0									
8	H04	습도	49.9									
9	T05	온도	27.0									
10	H05	습도	49.9									
11	T06	온도	27.0									
12	H06	습도	49.9									

*12Data

. Data 가

Scroll Bar가

Data

Data

Memory

File

Data

구분	구분명	구분값	구분명	구분값	구분명	구분값	구분명	구분값	구분명	구분값	구분명	구분값
1	T01	온도	24.0									
2	H01	습도	49.9									
3	T02	온도	29.0									
4	H02	습도	49.9									
5	T03	온도	27.0									
6	H03	습도	49.9									
7	T04	온도	27.0									
8	H04	습도	49.9									
9	T05	온도	27.0									
10	H05	습도	49.9									
11	T06	온도	27.0									
12	H06	습도	49.9									

Trend Monitor

Trend Monitor

Chart

10

가

Trend Graph

1

Graph

• Graph

Scroll

가

Graph

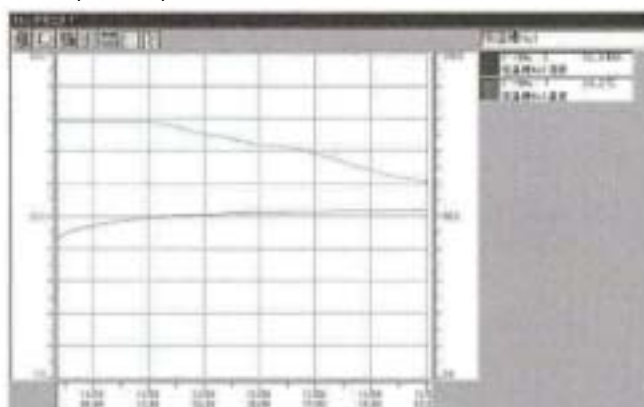
가

Graph

Graph

Interval

Graph



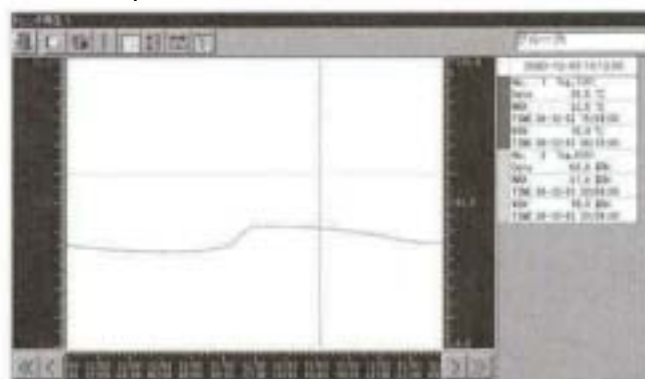
Trend

Memory

File

Data

Trend Graph



*Trend Monitor

Chart

Format

File

Data

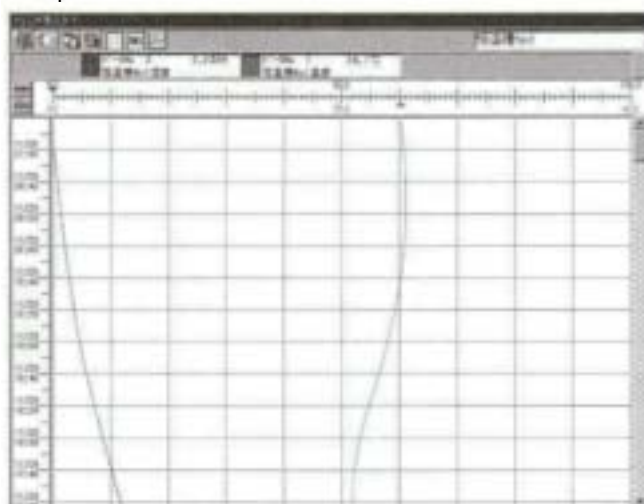
• Chart

Chart

Graph

Graph ,

Scroll



2001 1 15

구분	구분명	구분값	구분명	구분값	구분명	구분값	구분명	구분값	구분명	구분값	구분명	구분값
1	T01	온도	24.0									
2	H01	습도	49.9									
3	T02	온도	29.0									
4	H02	습도	49.9									
5	T03	온도	27.0									
6	H03	습도	49.9									
7	T04	온도	27.0									
8	H04	습도	49.9									
9	T05	온도	27.0									
10	H05	습도	49.9									
11	T06	온도	27.0									
12	H06	습도	49.9									

Data

• CHINOBUS

		Data	
	LE1000, LE2000	Data, Data	Range, Scale 가
	KH, KL Series	Data	—
	AH3000, AL3000 AH, AL Series	Data	—
Scanner	SE1000	Data	Range, Scale 가
	SE2000	Data, Data	Parameter 가
	DP, KP Series	DP3000, KP3000	
	DB1000, DB500 DZ Series	, ,	
	DI1000	Data	—

* LE1000, LE2000, AH, KH/KL(Model) Address가 15 SE2000
Address가 31 가 .

• MODBUS

		Data	
Graphic Recorder	BR Series	Data, Data	
	AH3000, AL3000	Data, Data	
Scanner	SE3000	Data, Data	
	LT Series	Data, Data	

• Flexible System

	FK1018, FK1028	Range, Scale
	FK1068, FK1078	
	FK2004, FK2014	
	FK1278, FK1288	
Count	FK4802	—
Count	FK4812	—
	FK4008	—

	Windows가	
	CPU	Pentium 100MHz
	OS	Windows95/98/Me WindowsNT4.0/2000
Personal Computer	Memory	· Windows95/98 Memory 16MB (32MB) · WindowsNT/2000/Me Memory 48MB (64MB)
	Disk Driver	· CD-ROM Driver가 1 100MB Hard Disk Driver가 1
Port	Windows가 Support COM1~COM4	Port 1 가
Display	Color	Analog RGB 640x480x, 800x600, 1024x768, 1280x1024 Dot, 256
Printer	Windows	. Color Hard copy 가

Graphic Recorder BR Series



250mm Hybrid Recorder
LE1000/2000 Series



180mm Hybrid Recorder
KH/AH/AH3000 Series
100mm Hybrid Recorder
KL/AL/AL3000



Field Scanner SE1000/2000/3000
Series



Digital Program DB/LT/DZ Series
DP/KP Series



Digital
DI1000 Series



Flexible System FK Series



CHINO

: (株) CHINO
CHINO

T 445-813
TEL : (031)379 - 3700
FAX : (031)379 - 3777
http : //www.chinokorea.com
e-mail : webmaster@chinokorea.com

296-1